

# 2015/16 Annual Report

Oregon Symphony

CARLOS KALMAR, MUSIC DIRECTOR

## A season to celebrate



Audiences enjoyed orchestra performances with some of the world's best-known classical soloists.



Lang Lang



Yo-Yo Ma

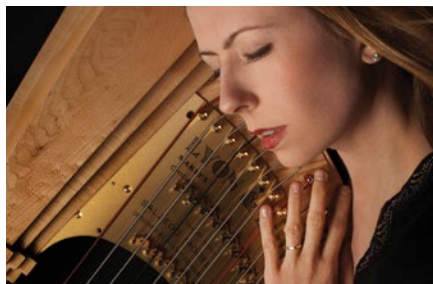


Joshua Bell

Presented our most diverse programming ever, with our first foray into country western.



Natasha Paremski



Yolanda Kondonassis

97 performances of 53 distinct concert programs  
18 sold-out concerts



Simone Lamsma

Provided our region with performers and performances spanning a wide entertainment spectrum.



Blind Boys of Alabama

Classical subscription revenue up 5%  
Classical ticket revenue passes the \$3 million mark



Gregory Alan Isakov



Lily Tomlin

New Kids subscribers up 23%  
New Pops subscribers up 46%



Melissa Etheridge



Johnny Mathis



Star Trek

# Beyond the concert hall, our commitment to share the power of music as widely as possible grew ever stronger.

Inspired our youth by guiding children along the first steps on the path of musical discovery



2,700 David Douglas School District students performed with the orchestra at the first-ever Link Up concert.

Over 40,000 people reached beyond the concert hall through our Education and Community Engagement events

Artist-in-Residence Colin Currie worked with percussionists at David Douglas High School.



Rosa Parks Bravo Youth Orchestra enjoyed a visit from none other than Joshua Bell.

Violinist Greg Ewer helps ensure a new generation of music makers through the OCF Studio to Schools Initiative.

Supported a community of music makers by mentoring student and aspiring musicians and encouraging life-long learning of music

250 music education and community engagement programs

36 Kinderkonzerts for 8,000 students

14 Symphony Storytimes for 1,000 pre-schoolers

Fulfilled a community need through the transformative power of music



New musicNOW program brought music, memories, and movement to seniors living with dementia.

Thanks to our thousands of subscribers, donors, and funders of all sorts, the season was a strong one financially.

The Oregon Symphony solidified its debt-free stability, achieving a seventh consecutive year with an operating surplus and setting numerous records, including total season subscription revenue, total classical ticket revenue, percentage of first-time ticket buyers, the highest-grossing single concert, and the amount raised at the annual gala.

The total annual budget of \$16,665,775 included artistic programming, musician salaries and benefits, community programs, and all administrative costs.



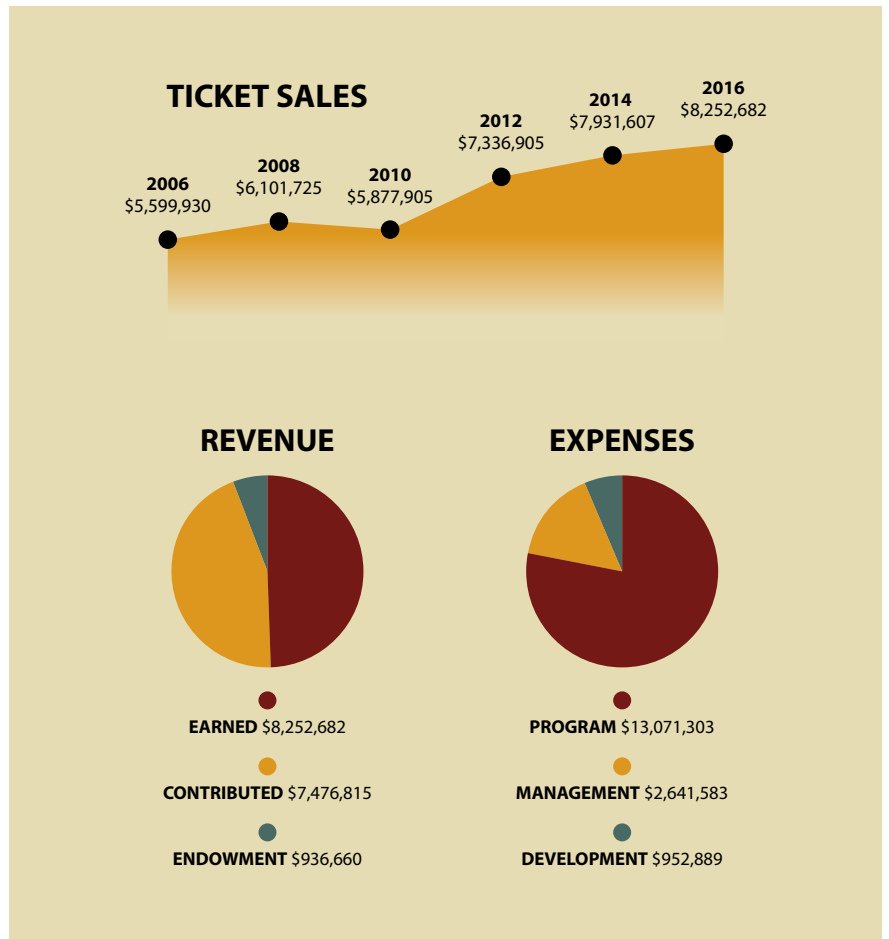
400 attendees at the Annual Gala had a celebratory time and set a new Gala record – \$870,000 in contributions.



The latest CD – Spirit of the American Range – garnered another Grammy award nomination for Best Orchestral Performance.



Throughout the season 4,200 donors contributed \$7.5 million in generous contributions.



Our thanks to each and every one of our loyal fans and patrons who helped make 2015/16 such an extraordinary season!

