



OREGON
SYMPHONY®

CARLOS KALMAR
MUSIC DIRECTOR



2019/20 ANNUAL REPORT

MOVING MUSIC FORWARD



PRESIDENT'S LETTER

The 2019/20 Season presented your Oregon Symphony, and indeed our community as a whole, with unexpected and unprecedented challenges. Throughout, the world-class musicians of your Oregon Symphony remained committed to our mission: to bring music to more people in new ways. Our work inspired hope, supported youth education, and strengthened bonds through the shared experience of music – both in-person and virtually.

I am pleased to share this report from our fiscal year, which ended June 30, 2020. I thank you for your support, particularly in these uncertain times, and I look forward to returning to the stage as soon as it is safe to do so.

Scott Showalter, president & CEO



INSPIRING AND DIVERSE ARTISTRY

Throughout our season, we were proud to spotlight artists from diverse artistic traditions and cultural backgrounds, celebrating a rich tapestry of sound and pushing the boundaries of what a great orchestra can be. Our signature **SoundSights** performance of **The Tempest** brought together Sibelius' lush score with a staged version of the play from acclaimed director **Mary Birnbaum**. Anchored by Oregon Shakespeare Festival veteran **Tyrone Wilson**, our production brought this classic tale to life, highlighting themes of colonialism and imperialism.

We performed classical works from many composers of color and women composers, placing us in the top five orchestras nationwide for inclusive programming among orchestras of our size. Works from artists including Pulitzer Prize-winning African American composer **George Walker**, **Texu Kim**, **Missy Mazzoli**, **Gabriela Lena Frank**, and World premiere commissions from **Gabriella Smith** and **Andy Akiho** delighted and inspired audiences.

Our onstage productions are only part of our efforts to reach a broad and diverse community. Visit our website to learn more about our many on- and off-stage programs.

Beyond the classical genre, we featured celebrated artists from the worlds of jazz, hip hop, mariachi, gospel, Motown, and more as part of our Pops and Special Concert series. More than 138,000 joined us for a live performance, while 26 million more heard the Oregon Symphony via broadcast on American Public Media.

We were forced to cancel 32 planned concerts in Portland and Salem that would have brought even more groundbreaking artistry to our community. Highlights that we are working to reschedule for future seasons include the remaining two **SoundSights** collaborations with Oregon visual artists **Rose Bond** and **Michael Curry**, and the World premiere of **An African American Requiem** by Portland composer **Damien Geter**. This piece, developed in partnership with vocal group **Resonance Ensemble**, honors black Americans lost to racial violence throughout history. Working with broadcast partners, we will bring this important work to a national audience.



The Tempest



Cirque Nutcracker

We were proud to bring a wide selection of the most celebrated artists of our time to Oregon during the 2019/20 Season



Wyclef Jean



Texu Kim



Missy Mazzoli



Chick Corea

RESPONDING IN A CRISIS

When the coronavirus pandemic reached Oregon, we canceled in-person performances to keep our community safe. Knowing that our community would be facing a prolonged period of isolation and mourning, we felt our music could provide comfort, hope, and connection to help us all persevere.

Our musicians and staff quickly pivoted to find new ways of bringing inspiration to our community digitally. **minute for music** featured short videos by Symphony musicians playing in their homes and neighborhoods. In **Mondays with the Maestro**, Carlos Kalmar's video chats explored how composers convey

emotion through their music. **Ask a Musician** allowed supporters to submit questions for a weekly Instagram Live chat between one of our musicians and Associate Conductor Norman Huynh.

Under the leadership of **Creative Chair Gabriel Kahane**, we responded artistically to the pandemic with a goal to bring our community together in gratitude. **Essential Sounds** is a free, six-part program that uses music, storytelling, and imagery to help us honor the contributions of our most essential workers. The series garnered national attention and was featured on NPR's Live Sessions.



Essential Sounds

Digital programming is available to watch on demand on the Oregon Symphony's website and YouTube channel.

COMMUNITY ENGAGEMENT



Cymaspace



Young People's Concert



Digital Symphony Storytime



Prelude Performance

Our school-based and community-based partnerships helped us enrich the lives of more than 75,000 community members with in-person and digital programming. It is a central piece of our mission to use music to meet the needs of our entire community, and foster equitable access to the arts.

More than 20,000 K-12 children took steps on the path of musical discovery through our in-person youth programming. Students attended one of five **Young People's Concerts** in Portland, Salem, and Newberg; enjoyed a **Kinderkonzert** at a neighborhood school; performed a **Prelude Performance** in our lobby; visited a rehearsal; or worked with a Symphony musician coach. A new partnership with **Cymaspace** allowed us to create an adaptive Kinderkonzert experience

for deaf and hard of hearing students to experience music visually.

Nonprofit partners helped us bring the healing powers of music to some of our most vulnerable neighbors. Performances at **Rose Haven Women's Shelter**, **Coffee Creek Correctional Facility**, **St. Mary's Home for Boys**, **Cascadia Behavioral Health**, and **Maybelle Center for Community** used music as a tool for connection and inclusion. The **Lullaby Project**, in partnership with **Portland Homeless Family Solutions**, helped parents experiencing homelessness build resilience and hope for their future through songwriting. Gabriel Kahane worked with **Outside the Frame** to empower marginalized youth to tell their stories through music and film.

When the pandemic hit, we changed our delivery methods to continue serving our community. We created 13 video episodes of **Symphony Storytime**, our beloved program combining literacy and music. More than 50,000 viewers have since tuned in to a Storytime video in English or Spanish. Recognizing the intense isolation that our high-risk senior population would endure during the pandemic, our musicians created special digital **Musical Greetings** to build community and provide hope, reaching hundreds of people living in full- or part-time care.

This is just a small sample of our community-based work. Visit our website for our full Learning and Community Engagement report.



Itzhak Perlman



George Walker



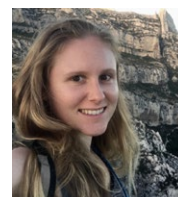
Stephen Hough



Gabriela Lena Frank



Colin Currie



Gabriella Smith



Byron Stripling

2019/20 SEASON BY THE NUMBERS

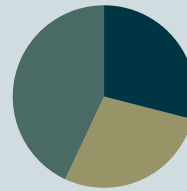
With the support of our concertgoers, donors, and partners, the Oregon Symphony continues to serve as an artistic catalyst for a culturally vibrant Oregon, bringing joy, inspiration, and healing to hundreds of thousands of community members in our region and beyond. Thank you for helping us achieve this tremendous impact.

Full-time Musicians: 76
Onstage Performances: 115 scheduled, 83 performed
Tickets Sold: 138,658
Broadcast Reach: 26 million+ listeners
Reach of Educational Programs: 75,000+ in-person and online
Online Engagement: 300,000+ views
Unique Donors: 7,692
Funds Raised at First-ever Virtual Gala: \$1.2 million

COVID-19 AND FINANCIAL IMPACT

For the first time in more than a decade, we close our fiscal year with a deficit due to canceled concerts from COVID-19. Many subscribers and single ticket holders generously converted their canceled tickets to a donation, or exchanged them for credit towards a future performance. This helped the Symphony to retain more than \$1.3 million in revenue across FY20 and future fiscal years.

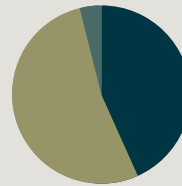
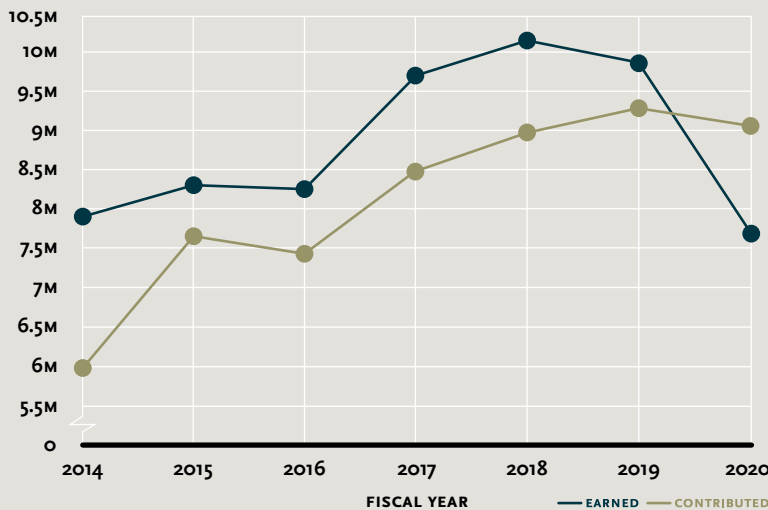
We are also grateful to the many individual, foundation, and government partners who made additional gifts or increased their contribution to the Oregon Symphony during the pandemic. We deeply value your support, especially at this challenging time. *Thank you.*



TICKET CONVERSIONS

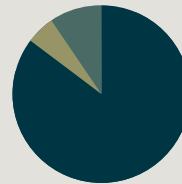
- EXCHANGED FOR FUTURE CONCERT 29%
- DONATED 28%
- REFUND 43%

REVENUE



REVENUE \$17,239,986

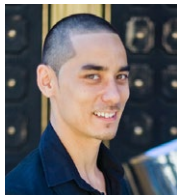
- EARNED 44%
- CONTRIBUTED 52%
- ENDOWMENT 4%



EXPENSES \$19,719,038

- PROGRAMS 85%
- DEVELOPMENT 6%
- MANAGEMENT 10%

COMBINED UNAUDITED FINANCIALS FOR OREGON SYMPHONY ASSOCIATION AND OREGON SYMPHONY ASSOCIATION IN SALEM 7/1/19 THROUGH 6/30/20.



Andy Akiho



Johannes Moser



Sarah Kwak



Edna Vazquez



Leila Josefowicz



Tituss Burgess



Gabriel Kahane

921 SW Washington Street, STE 200, Portland, OR 97205-2800 | 503-228-1353 MAIN